

Hickinbotham



HOUSE & LAND

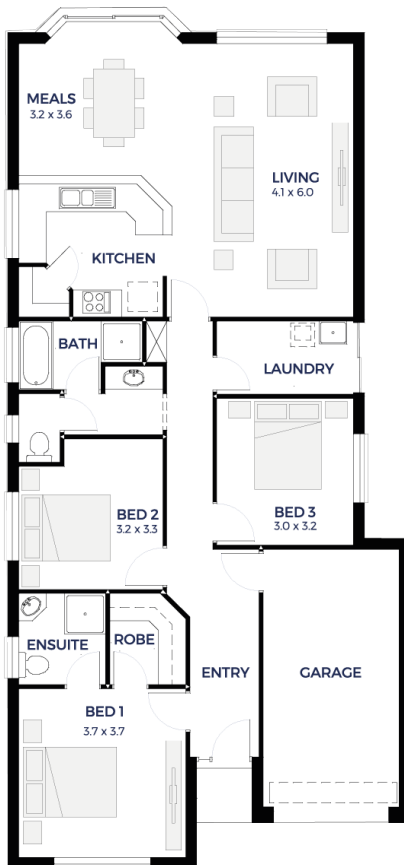
\$295,322*

LOT 32

Evergreen Drive,
Salisbury North 'The Green'

BLOCK SIZE: **280.00m²**
HOUSE SIZE: **146.85m²**

TOPAZ



PACKAGE INCLUSIONS:

- Single garage (includes two brick piers, 1 x roller door and concrete slab)
- Ducted reverse cycle air conditioning
- Stormwater disposal
- Perimeter paving & driveway included
- Complete flooring covering
- Silver Range Carpet to all bedrooms
- 2700mm high ceiling
- Instantaneous hot water system
- Raised breakfast bar
- Extra shower head to Ensuit
- Walk-in pantry including shelves
- Walk-in robe and shelf
- Tiling to the ceiling in (bathroom & ensuite)
- Pivot shower cubicle doors
- Built-in linen cupboard
- 1 3/4 bowl sink to kitchen
- Keylocks to sliding windows
- Exhaust fans
- Smoke detectors
- Choice of elevations

ENQUIRIES: Michael Joubory
M: 0415 204 777 E: michaelj@hickinbotham.com.au

hickinbotham.com.au

*Conditions apply. Certain elevations may not match the particular floor plan published in this package and, as such, all floor plans and elevations are for illustration purposes only. Land subject to availability. The land referred to in this promotion is not owned by us. We make no representation and, to the extent permissible at law, we disclaim all liability, as to the suitability of the land to build on, or the suitability of any house design, or otherwise. You must satisfy yourself of that by inspection, or by taking professional advice, or otherwise. Pricing is indicative only and based on standard costings. Price may vary depending on selections, engineering, council and utility requirements and adjustments to allowances. All packages subject to final council approval. Alan Hickinbotham Pty Ltd ABN 13 007 567 222, RLA 230557. Construction Services Australia Pty Ltd ABN 99 007 641 787, Building Licence G8969.