



HOUSE & LAND

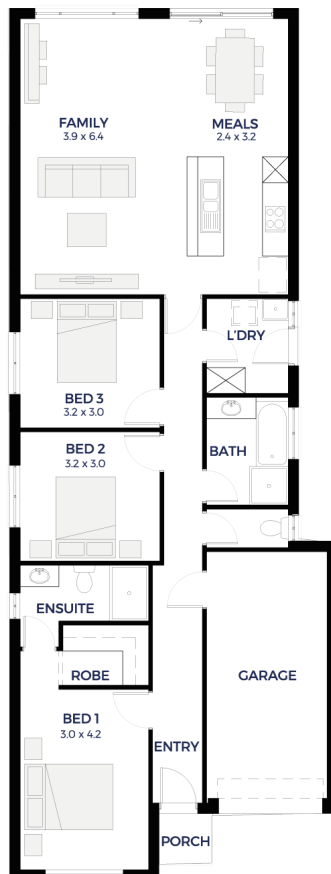
\$264,441*

LOT 17

Evans Crescent,
Evanston Gardens
'Gateway Estate'

BLOCK SIZE: **336.00m²**
HOUSE SIZE: **137.63m²**

TARRAGONA



PACKAGE INCLUSIONS:

- TURN KEY PACKAGE
- Low deposit finance available ask how!
- Up to \$25,000 worth of grants
- Package suitable for Homestart Requirements
- UPGRADED Portico to front elevation
- UPGRADED Automatic panel lift garage door
- Single Garage, 2 brick piers, concrete slab & automatic garage door
- Paving to perimeter (1m) and driveway
- Stormwater disposal
- Flooring Carpet to bedrooms & Timber laminate to remainder
- Ducted reverse cycle heating & cooling air conditioning
- Insulation to external walls, ceiling & garage
- Overhead cupboards to kitchen inc over fridge provision
- UPGRADED Westinghouse Retractable rangehood
- Stainless steel appliances
- Flat breakfast bar
- Dishwasher provision
- NBN Provision & cabling to connect
- X2 TV points
- 1200mm high tiling (bathroom & ensuite) & 3 rows of tiles over kitchen
- Multi directional shower heads
- Keylocks to sliding windows
- Termite protection
- Instantaneous hot water system
- Siteworks & footings included
- More house & land packages available

ENQUIRIES: Kimberly Albers
M: 0450 585 701 E: kimberlya@hickinbotham.com.au

hickinbotham.com.au

*Conditions apply. Certain elevations may not match the particular floor plan published in this package and, as such, all floor plans and elevations are for illustration purposes only. Land subject to availability. The land referred to in this promotion is not owned by us. We make no representation and, to the extent permissible at law, we disclaim all liability, as to the suitability of the land to build on, or the suitability of any house design, or otherwise. You must satisfy yourself of that by inspection, or by taking professional advice, or otherwise. Pricing is indicative only and based on standard costings. Price may vary depending on selections, engineering, council and utility requirements and adjustments to allowances. All packages subject to final council approval. Alan Hickinbotham Pty Ltd ABN 13 007 567 222, RLA 230557. Construction Services Australia Pty Ltd ABN 99 007 641 787, Building Licence G8969.