

# Hickinbotham



HOUSE & LAND

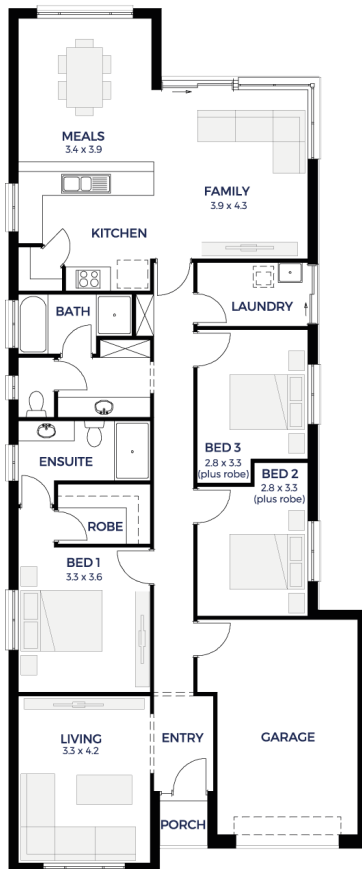
**\$316,969\***

## LOT 213

Perc Crook Court,  
Nuriootpa 'Barossa  
Estate'

BLOCK SIZE: **660.00m<sup>2</sup>**  
HOUSE SIZE: **166.32m<sup>2</sup>**

VIENNA



### PACKAGE INCLUSIONS:

- PRE-RELEASE STAGE 8
- FIXED PRICE FOOTINGS
- NO TRAVEL CHARGES TO ESTATE
- 2.7m (9ft) ceiling height included
- Premium facade as shown or as requested
- Ducted reverse cycle air con included
- Flooring allowance included
- Double garage with single span panel lift door
- 25 year structural guarantee
- And so much more!

**ENQUIRIES: Bradley Foster**  
M: 0413 876 516 E: [bradleyf@hickinbotham.com.au](mailto:bradleyf@hickinbotham.com.au)

[hickinbotham.com.au](http://hickinbotham.com.au)

\*Conditions apply. Certain elevations may not match the particular floor plan published in this package and, as such, all floor plans and elevations are for illustration purposes only. Land subject to availability. We make no representation and, to the extent permissible at law, we disclaim all liability, as to the suitability of the land to build on, or the suitability of any house design, or otherwise. You must satisfy yourself of that by inspection, or by taking professional advice, or otherwise. Pricing is indicative only and based on standard costings. Price may vary depending on selections, engineering, council and utility requirements and adjustments to allowances. All packages subject to final council approval. Alan Hickinbotham Pty Ltd ABN 13 007 567 222, RLA 230557. Construction Services Australia Pty Ltd ABN 99 007 641 787, Building Licence G8969.